

# Weihnachtshymne

Felix Mendelssohn Bartholdy

Bearb. Walter Pichler

*Allegro moderato*

*Bariton Solo*

Tenor/Bass



Gott sei Dank durch al - le Welt, der sein Wort be - stän - dig hält und der Sün - der Trost und Rat zu uns

Orgel

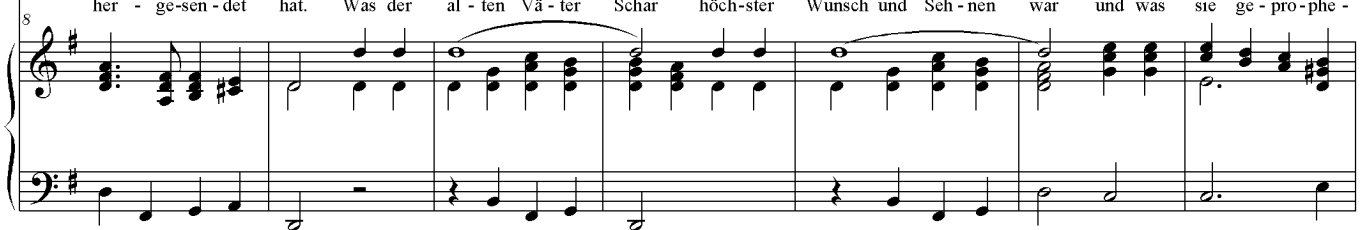


T/B



her - ge - sen - det hat. Was der al - ten Vä - ter Schar höch - ster Wunsch und Seh - nen war und was sie ge - pro - phe -

Org.



T/B



zeit, ist er - füllt in Herr - keit. Gott sei Dank durch al - le Welt, der sein Wort be - stän - dig hält.

Org.



S/A



Zi-ons Hilf und A-brams Lohn, Ja-kobs Heil, der Jung-frau Sohn! Wun-der bar' Rat, Kraft und Held hat sich treu-lich ein-ge - stellt. Sei will-

T/B



Org.



# Weihnachtshymne

2  
31

S/A  
T/B

kom - men, o mein Heil! Dir Hosi - an - na, o mein Teil! Rich - te du auch ei - ne

Detailed description: This block contains the vocal staves for Soprano/Alto (S/A) and Tenor/Bass (T/B). The S/A staff is in treble clef and the T/B staff is in bass clef. Both are in the key of D major. The lyrics are written below the notes. The music consists of a series of chords and single notes, with some phrasing slurs.

Org.

Detailed description: This block shows the organ accompaniment for the first system. It consists of two staves, treble and bass clef. The music is primarily chordal, with some moving lines in the bass register. The organ part begins at measure 31.

B $\flat$  Trp. 1  
B $\flat$  Trp. 2  
Pos. 1  
Pos. 2

Detailed description: This block contains the staves for two B-flat Trumpets (Trp. 1 and 2) and two Positones (Pos. 1 and 2). The trumpets are in treble clef and the positones are in bass clef. The music is primarily chordal, with some moving lines in the bass register. The trumpets play a melodic line, while the positones provide harmonic support.

S/A  
T/B

Bahn dir in mei-nem Her-zen an. Gott sei Dank durch al - le Welt, der sein Wort be-stän - dig hält.

Detailed description: This block contains the vocal staves for Soprano/Alto (S/A) and Tenor/Bass (T/B) for the second system. The lyrics are written below the notes. The music continues with a similar harmonic structure to the first system.

Org.

Detailed description: This block shows the organ accompaniment for the second system. It consists of two staves, treble and bass clef. The music is primarily chordal, with some moving lines in the bass register. The organ part begins at measure 36.

B $\flat$  Trp. 1  
B $\flat$  Trp. 2  
Pos. 1  
Pos. 2

Detailed description: This block contains the staves for two B-flat Trumpets (Trp. 1 and 2) and two Positones (Pos. 1 and 2) for the second system. The trumpets are in treble clef and the positones are in bass clef. The music is primarily chordal, with some moving lines in the bass register. The trumpets play a melodic line, while the positones provide harmonic support.